

BreWii

Instructions:



By BreWii.com

Things You'll Need:

- Zelda Twilight Princess Disc
- Wii
- Wii remote
- SD card (non-SDHC)
- SD card Reader
- PC with Internet Access

Twilight Hack Instructions

Step 01- Where to find game disc serial number. Preparations:

After you have obtained the Zelda: Twilight Princess game, play the game at least once [and save] before starting Step 2. Also look at the inner part of the game disc for the disc serial number[see picture below].



Step 02- Use a card reader to format the SD card to FAT 16/32 and search engine "wiibrew: twilight hack" to find the Twilight Princess hack download.

NOTE: This is also a good time to see what **firmware** version you have installed on your wii. Do this by going into Wii Options and clicking on the Wii Settings. The firmware version is shown at the top of the screen [See Picture]. You will need to know this to determine which version of the Twilight Princess hack is needed for your Wii. Pick the Twilight Princess hack version that corresponds to your firmware version.



Step 03- Download the Twilight Hack from one of the following links – depending on your Wii's version number:

Version 3.3 and earlier: [twilight-hack-v0.1-beta1.zip](#)

(MD5: 63ce2af59ba28f2507e0c5c2da60720b)

Version 3.4: [twilight-hack-v0.1-beta2.zip](#)

(MD5: 4b4eae530dc94d6f1710b0a96bf9e00f)

These downloaded files will be used in step 4

If you have an existing Zelda save that you want to backup, do so before proceeding: 1. Put our SD card in your Wii and turn it on.

2. Go into Wii Options

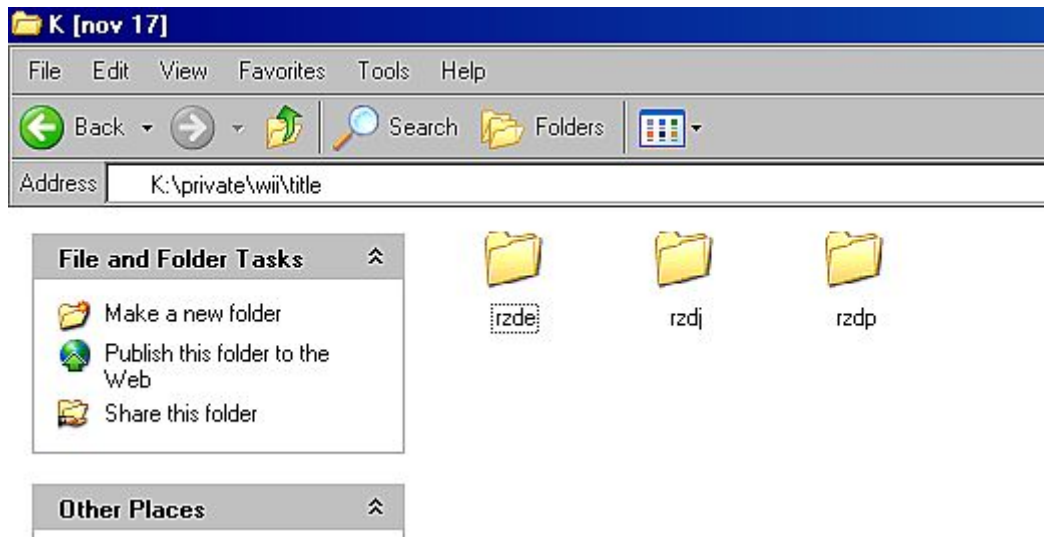
3. Click on the Data Management

4. Click on Save Data and choose "Wii"

5. Find your Zelda save, click on it, click "Copy", and click "Yes"

6. Put your SD card in your computer or card reader and copy the "private" folder from the root of the SD card to your hard drive.

Step 04- If your disc has -[A.] "RVL-RZDE-0A-0 USA" then you will need the files from the following directory: /private/wii/title/rzde/data.bin [TwilightHack0 in the Zelda game load screen]. -[B.] If your disc has "RVL-RZDE-0A-2 USA" then you will need the files from the following directory: /private/wii/title/rzde/data.bin [TwilightHack2 in the Zelda game load screen]. If you have something different, then google "wiibrew: twilight disc serial"



Step 05- Using your Wii firmware version from Step 2. and the Zelda disc serial number and Twilight Princess Hack files from Steps 1. and 4., you will now copy the appropriate files to the root of your SD card. What I do is delete the unneeded twilight princess hack files from /private/wii/title/ and copy the "private folder" to the root of the SD card [overwriting the one on the SD card].

Step 06- You can add any homebrew's [of your choice] "boot.dol" file to the root of your SD card. Homebrew can be found by searching the wiibrew site. I have another tutorial explaining how to run the homebrew browser after you have the twilight princess hack installed.

Step 07- 1. After all the files are on the SD card, take it from you computer and insert it into your Wii and turn it on.

2. Go into Wii Options
3. Click on the Data Management
4. Click on Save Data and choose "Wii"
5. Find your Zelda save, click on it, click "Erase", and click Yes.
6. Click on "SD Card" and find the Zelda hack save, click on it, click "Copy", and click Yes.
7. Insert the Zelda Twilight Princess disc into the Wii and exit the menu.

Step 08- Run the game and load the "TwilightHack0" **or** "TwilightHack2" version of the game **as appropriate** [see Step 4.]. Once the game loads, you will walk backwards or talk to the

guy that's there. This will start the installation.



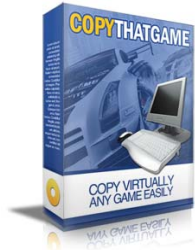
Step 09- Follow the instructions on screen and you are ready for homebrew. To run the homebrew, just follow Step 8, but it will trigger the homebrew to start instead of the installation.

Visit [Unlimited Wii Downloads](#) to get premium downloads for your Wii. You will find high quality downloads of absolutely every game you need there!



Backup your Wii Games with CopyThatGame! The Easiest way to copy games. It also works on PS3 – and Xbox 360!

[Click Here for CopyThatGame!](#)



© Copyright 2009 – [BreWii.com](#)